

Liquid UI: Using 'ws_' runtime command

Purpose

Using '/ws_' command at runtime to perform several very useful tasks.

The ws_ commands can be executed directly from the transaction box.

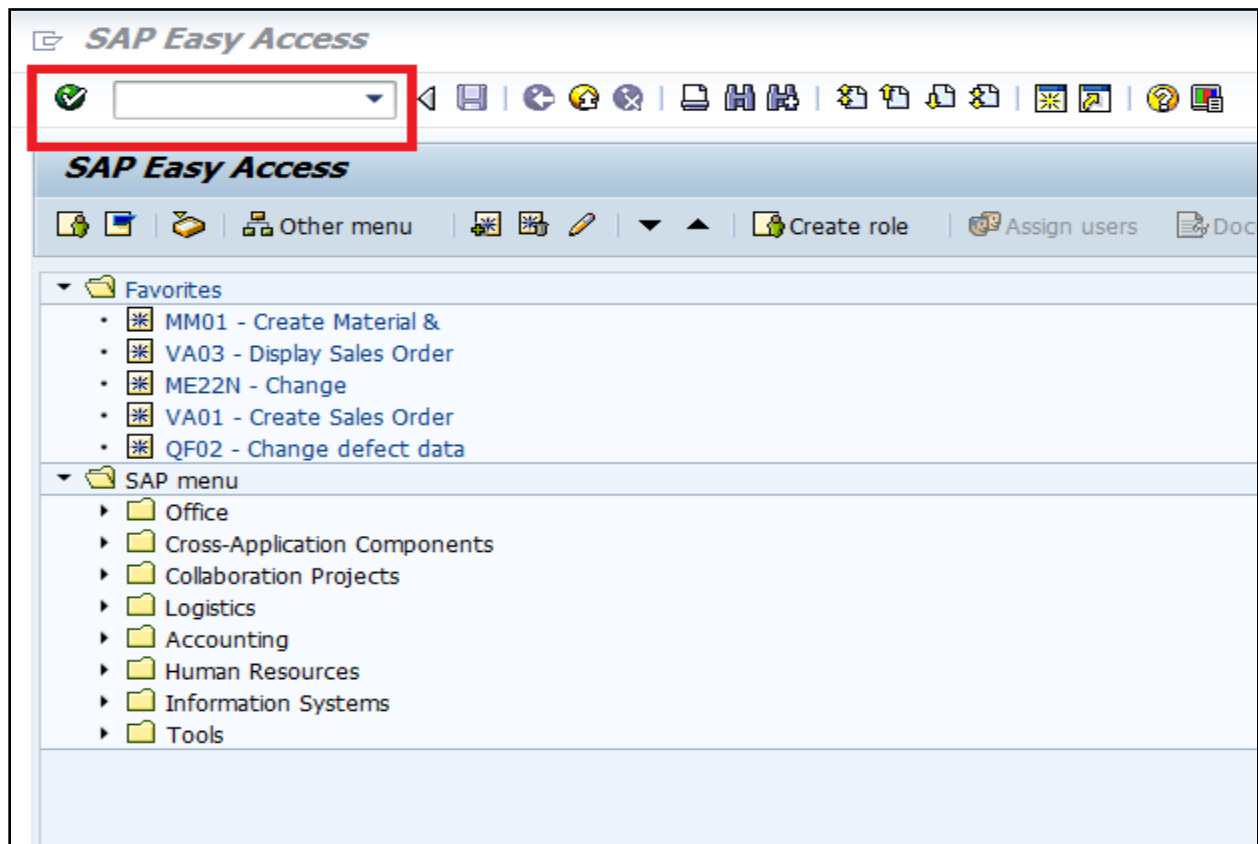
SYNTAX-

/ws_vap -Turns Visible Processing on or off at runtime.

/ws_WS -Turns WS on or off at runtime.

User Interface

Log into SAP and on the SAP Easy Access transaction field place the '/ws_' commands as described in syntax.



/ws_vap

This command is used to turn on/off visible processing during runtime. The ws_vap command does not take any options.

Visible processing is useful as it enables users to follow the actual process of a script step by step. The syntax is as follows:

/ws_vap=x

There are two values that can be entered as follows:

- 0** -Turns visible processing off at runtime.
- 1** -Turns visible processing on at runtime.

/ws_WS

The ws_WS command is used to turn the WS engine on and off at runtime. The ws_WS command does not take any options.

The syntax is as follows:

/ws_WS=x

There are two values that can be entered as follows:

- 0** -Turns the WS engine off at runtime.
- 1** -Turns the WS engine on at runtime.