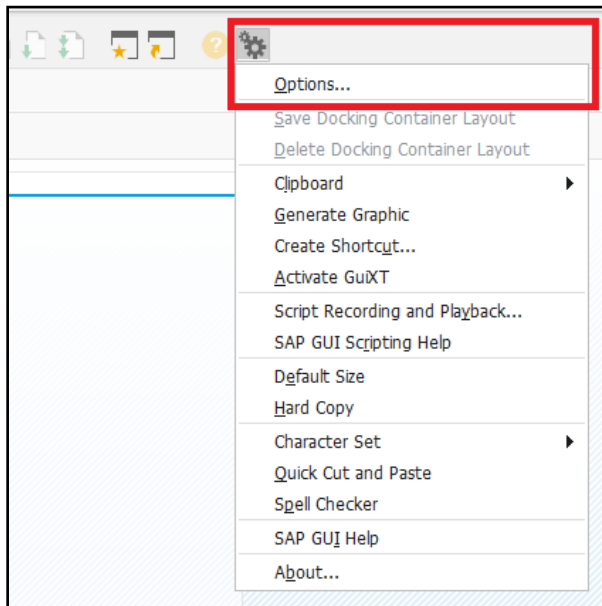


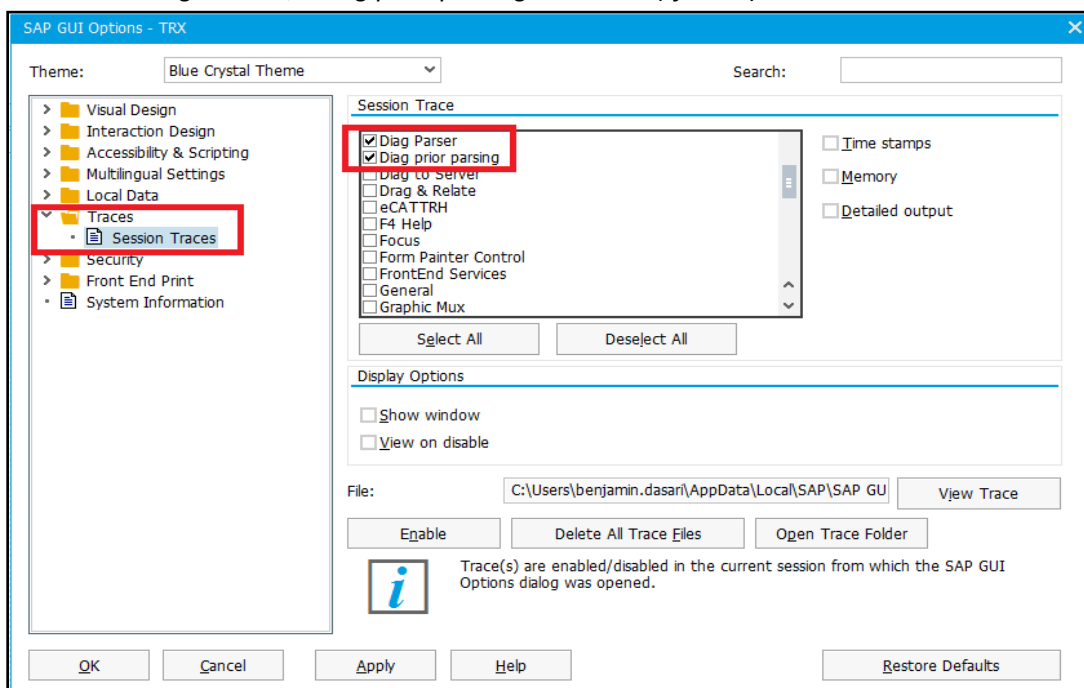
# SAPgui – Trace File Collection

## Below are the steps to collect Trace Files from SAPgui –

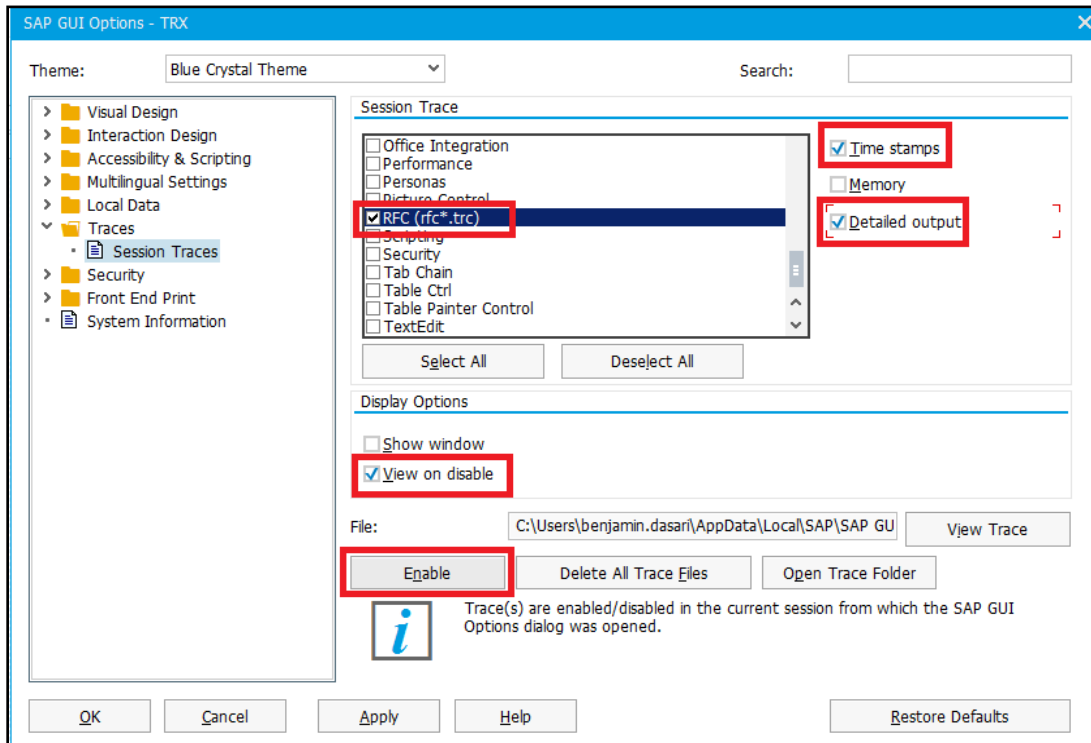
- De-Activate GuiXT if cannot access the screen where the issue is, else leave it activated
- Click on “Options...” as shown below:



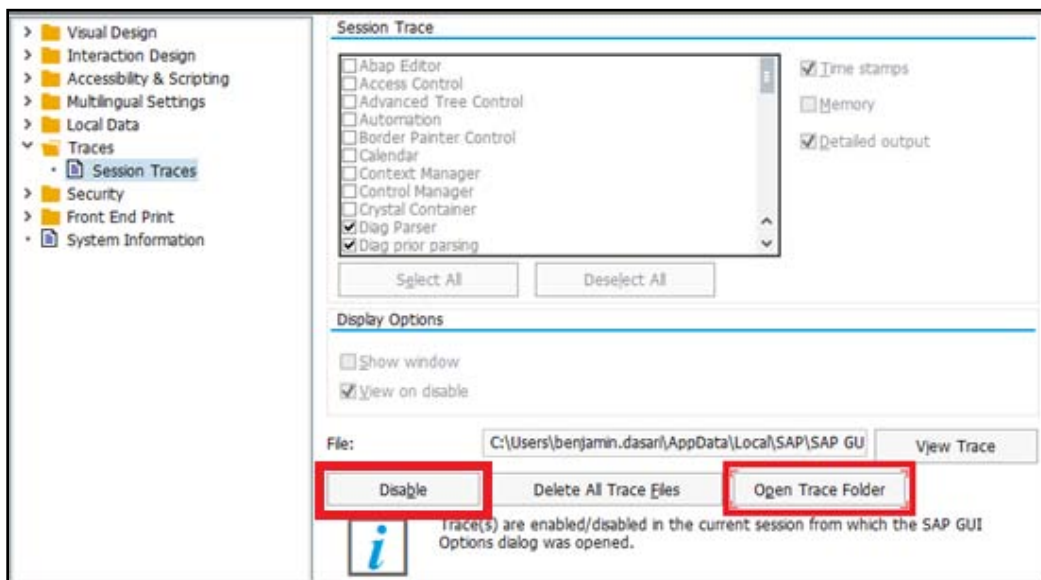
- Select “Traces->Session Traces”
- Check the “Diag Parser”, “Diag prior parsing” and “RFC(rfc\*.trc)” in “Session Trace”



- Also, check the "Time stamps", "Detailed output" and "View on disable"
- Click "Enable" pushbutton
- Click "OK"



- After navigating to the screen where the issue is..
- Follow the steps above to go back to "Options..."
- "Traces->Session Traces"
- Click on "Disable" pushbutton
- Click on "Open Trace Folder" pushbutton



- Copy the most recent 2 trace files starting with "safewdll\_..." and "rfc..." to be given to engineering team.

