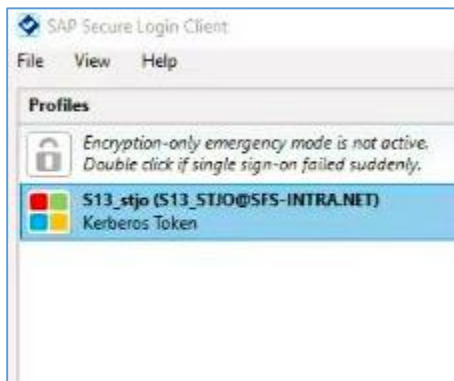
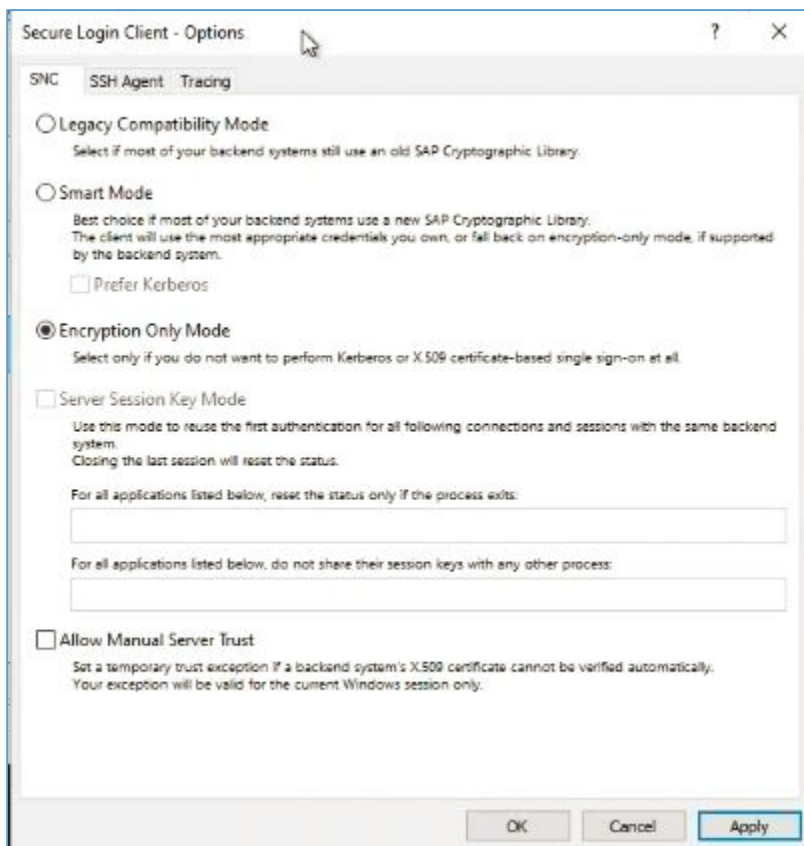


Encryption from Liquid UI Server to SAP Server using SAPCRYPTO

1. SAP Secure Login Client must be installed on the Liquid UI Server



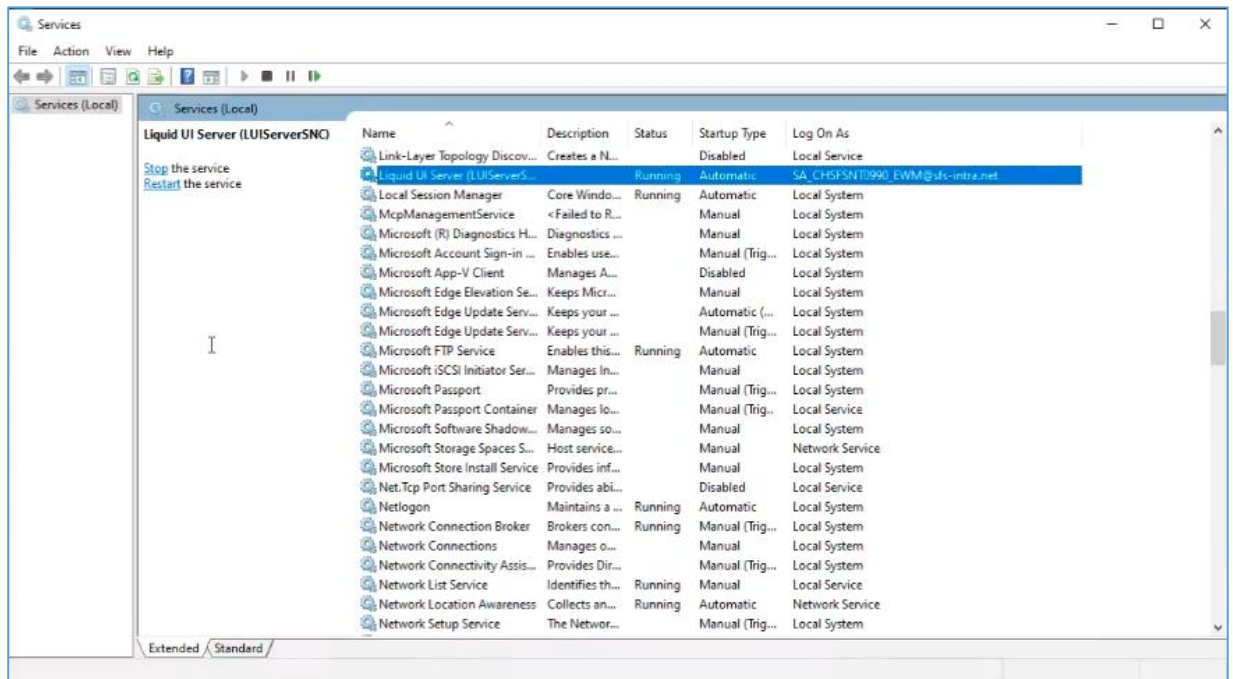
- In case Kerberos (network authentication protocol) is used by default for secure SSO of users then make sure the below option (Encryption Only Mode) is selected in Secure login client. If not, 'Smart Mode' will be fine.



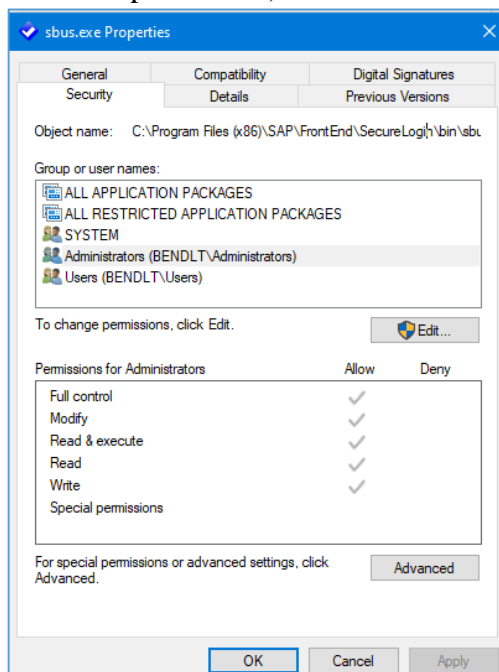
- For Liquid UI Server 64-bit, the path in sapproxy.ini file should be below:
 - `snc_lib=C:\Program Files\SAP\FrontEnd\SecureLogin\lib\sapcrypto.dll`

Encryption from Liquid UI Server to SAP Server using SAPCRYPTO

2. liquid UI Server must run under AD Domain Admin account (with full admin rights)

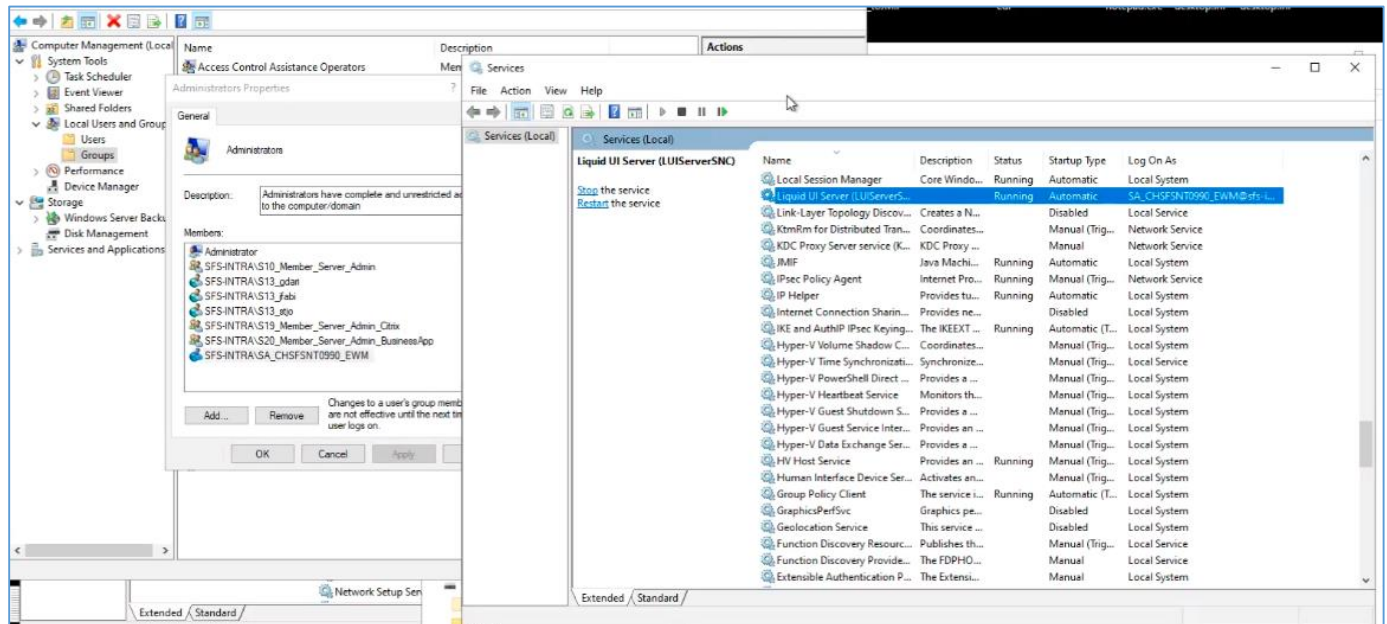


- In case if there are issues running as service but console mode works fine, you can check some items below:
 - Go to "C:\Program Files (x86)\SAP\FrontEnd\SecureLogin\bin"
 - Right click "sbus.exe" -> Properties->Security->Administrators (AD domain account should be part of this)



Encryption from Liquid UI Server to SAP Server using SAPCRYPTO

- Also go to Computer management ->Local Users and Groups->Groups-> Double click 'Administrators' ->AD Domain account should be part of this list



Encryption from Liquid UI Server to SAP Server using SAPCRYPTO

3. SAP PSE certificate must be exported and installed on Liquid UI Server

- Certificates must be installed in Trusted Root Certification Authority
 - Go to Run -> mmc -> File (Add or Remove Snap-ins) -> Certificates (Add >) -> Computer account -> Next -> Local computer -> Finish -> OK
 - Expand Certificates -> Trusted Root Certification Authority -> Certificates (Should contain all certificates. Intermediate can be under Intermediate Certification Authority).

