

# Liquid UI: F4 searchhelp on Liquid UI fields

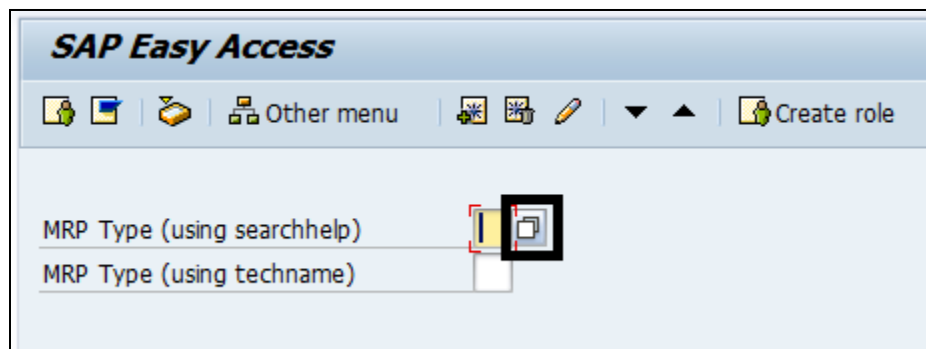
---

## Purpose


On a Liquid UI inputfield we can use the standard SAP F4 searchhelp display using the options of 'searchhelp' or 'techname'.

## User Interface

Log into SAP and on the SAP Easy Access Screen you will see 2 Liquid UI inputfields which have searchhelp options available. On clicking the highlighted icon below, it pulls up the standard SAP searchhelp.



## SAP Easy Access

   Other menu    ▼ ▲  Create role  Assign users

MRP Type (using searchhelp) ☐

MRP Type (using techname) ☐

### Hit List

Typ	MRP description
AP	External planning
M0	MPS, fixing type -0-
M1	MPS, fixing type -1-
M2	MPS, fixing type -2-
M3	MPS, fixing type -3-
M4	MPS, fixing type -4-
ND	No planning
P1	MRP, fixing type -1-
P2	MRP, fixing type -2-
P3	MRP, fixing type -3-
P4	MRP, fixing type -4-
PD	MRP
R1	Time-phased planning
R2	Time-phased w.auto.reord.point
RE	Replenishment plnd externally
RF	Replenish with dyn.SafetyStock
RP	Auto-replenishment
RR	Tmphsd. repl. w. dyn.trgt.stck
RS	Time-phased replenishment plng
SM	MRP
SS	MRP with Safety Stock Planning
V1	Manual reord.point w. ext.reqs
V2	Autom. reord.point w. ext.reqs
VB	Manual reorder point planning
VI	Vendor Managed Inventory
VM	Automatic reorder point plng
VS	Seasonal MRP
VV	Forecast-based planning
X0	External planning
X1	External planning



## Liquid UI Code [Script] User Interface file -

```
SAPLSMTR_NAVIGATION.E0100.sjs
1
2 del('X[IMAGE_CONTAINER]'); // Delete ActiveX Container on SAP Easy Access screen
3
4 inputfield([1,1], "MRP Type (using searchhelp)", [1,32], {"name":"z_mm01_mrptypesearchhelp", "size":2, "searchhelp":"H_T438A"}); // Using searchhelp option
5 inputfield([2,1], "MRP Type (using techname)", [2,32], {"name":"z_mm01_mrptypetechname", "size":2, "techname":"MARC-DISMM"}); // Using techname option
6
```

## Retrieve searchhelp or techname

### 1) For obtaining techname:

Press F1 on the field, 'MRP Type' in this example-

**Change Material 44608 (Fi**

Additional data Organizational levels

Basic data 2 MRP 1 MRP 2

Material 44608 Mat test #  
Plant 1000 Werk Hamb

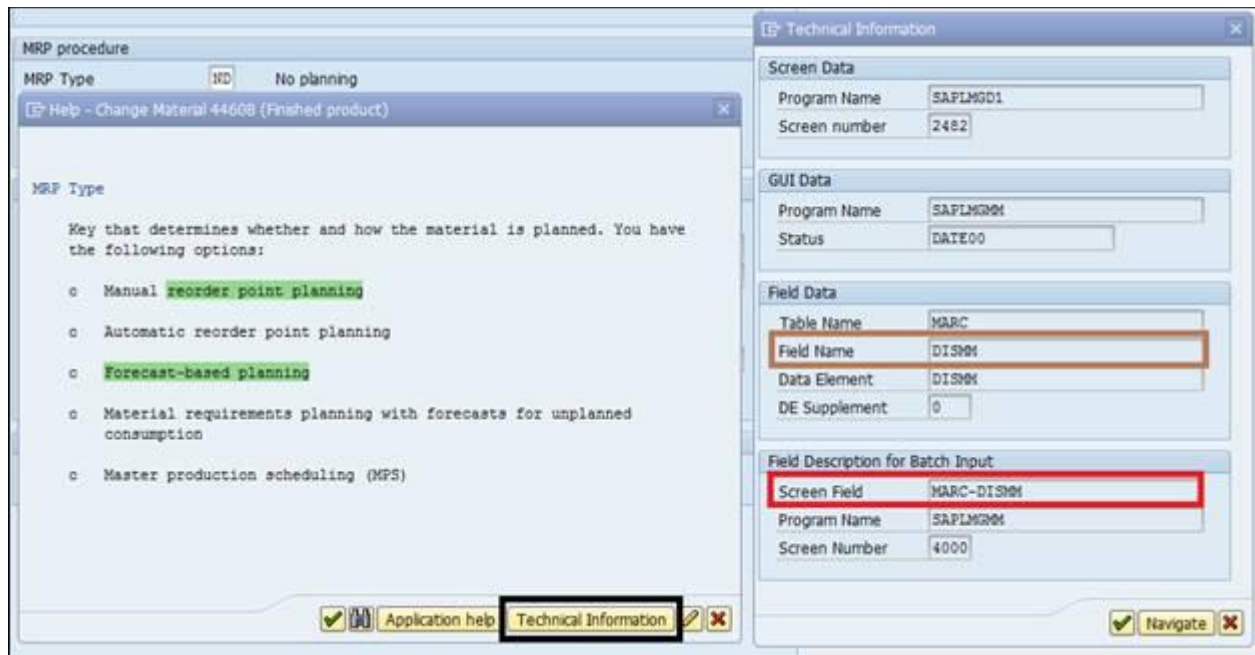
General Data

Base Unit of Measure EA Each  
Purchasing Group  
Plant-sp.matl status

MRP procedure

MRP Type ND No planning

Click on 'Technical Information' and use the 'Screen Field' name (highlighted in red) i.e., 'MARC-DISMM' in the options as shown below:



Ex:

```
inputfield([1,1], "Custom MRP Type", [1,20], {"name":"z_mm01_mrptype", "size":2, "techname":"MARC-DISMM"});
```

## 2) For obtaining searchhelp:

Please follow the above steps and if search help option is not available then double click on the 'Field Name' (highlighted in brown) i.e., DISMM. Then click on 'Entry help/check' tab and use the value in 'Srch Help' i.e., 'H\_T438A' as shown below.



Ex:

```
inputfield([1,1], "Custom MRP Type", [1,20], {"name":"z_mm01_mrptype", "size":2, "searchhelp":"H_T438A"});
```

**NOTE:** You can use either 'searchhelp' or 'techname' option, however it is recommended to use 'techname' only if 'searchhelp' is not available!