

WS Functional Automation

8.03 load()

Purpose

With `load()`, you can load an external file. Once this file is loaded, anything included in the file will be available for global use in WS scripts.

Syntax

```
load("filename");
```

You can load files from the following locations:

Local directories

To load a file from a directory on your local machine:

```
load("filename");
```

Note: If the file is not in the same directory as the script file, you must specify the full path.

Network shares

To load a file from a shared directory on the network:

```
load("\\\\company.com\\directory\\filename");
```

SAP Web Repositories

To load a file from the SAP Web Repository (SAPWR), use the following syntax:

```
load("SAPWR:Z.GUIXT.SAPLSMTR_NAVIGATION.0100.sjs");
```

Note: Use the [file](#) command to give the file an alias if it exceeds the 30-character limitation on SAPWR file names.

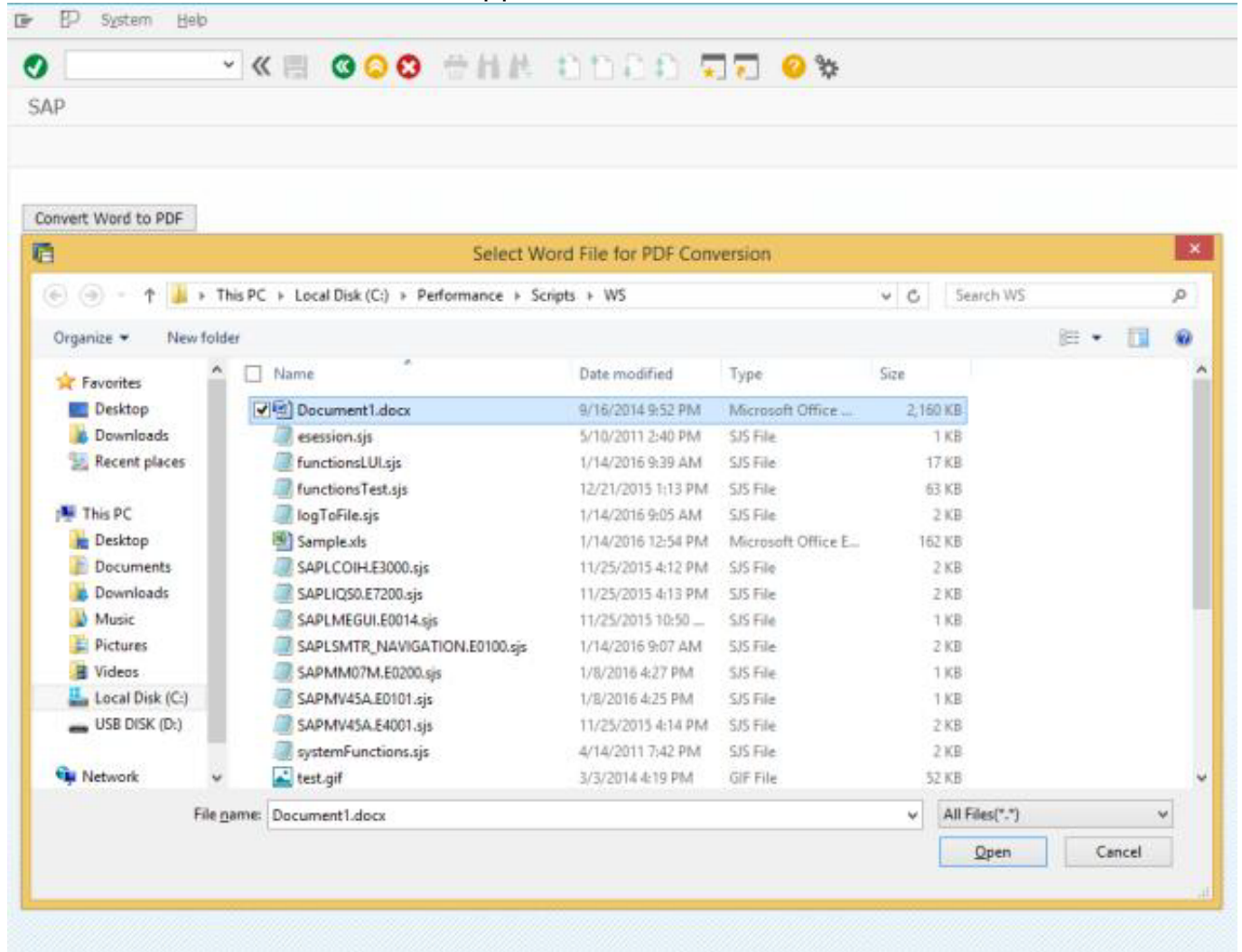
Options

The `load()` command does not take any options.

WS Functional Automation

Example

This example demonstrates the usage of load() command in converting the word file to PDF. The SAP screen will appear as follows:



Script

Open a script file and add the below code.

```
//ESESSION.sjs
```

```
// wsoffice.dll is required to be installed  
load('wsoffice');
```

[Script Details](#)

Usage Details

WS Functional Automation

- [Load external files using load\(\)](#)
- [enter\(\) with activeX controls](#)
- [WS Special Scripts - Logon Script \(elogon.sjs\) using load\(\)](#)
- [Replace selected text in multi-screen with load\(\)](#)
- [Running Excel Scripts with load\(\)](#)
- [Get current date using BAPI and with load\(\)](#)
- [Determine authorizations using SAP Roles and Profiles with load\(\)](#)
- [Pass values between sessions with load\(\)](#)
- [Retrieve metadata information of a website with load\(\)](#)
- [Get system IP address with load\(\)](#)
- [WSCurl Send Mail with load\(\)](#)
- [Translate text to other language with load\(\)](#)
- [Tree based multilevel screens using "name of the variable"](#)
- [Searchhelp using Function Module with load\(\) with load\(\)](#)
- [Determine data rows and columns in excel with load\(\)](#)
- [Update SAP fields with excel data and load\(\)](#)
- [Read selected grid data with load\(\)](#)
- [Get login username and role using _client and load\(\)](#)
- [Integrating Windows List View Control with SAPGUI using load\(\)](#)
- [Word spell checker with load\(\)](#)

Unique solution ID: #1066

Author: Punil Shah

Last update: 2019-05-13 11:55