

Server Deployment

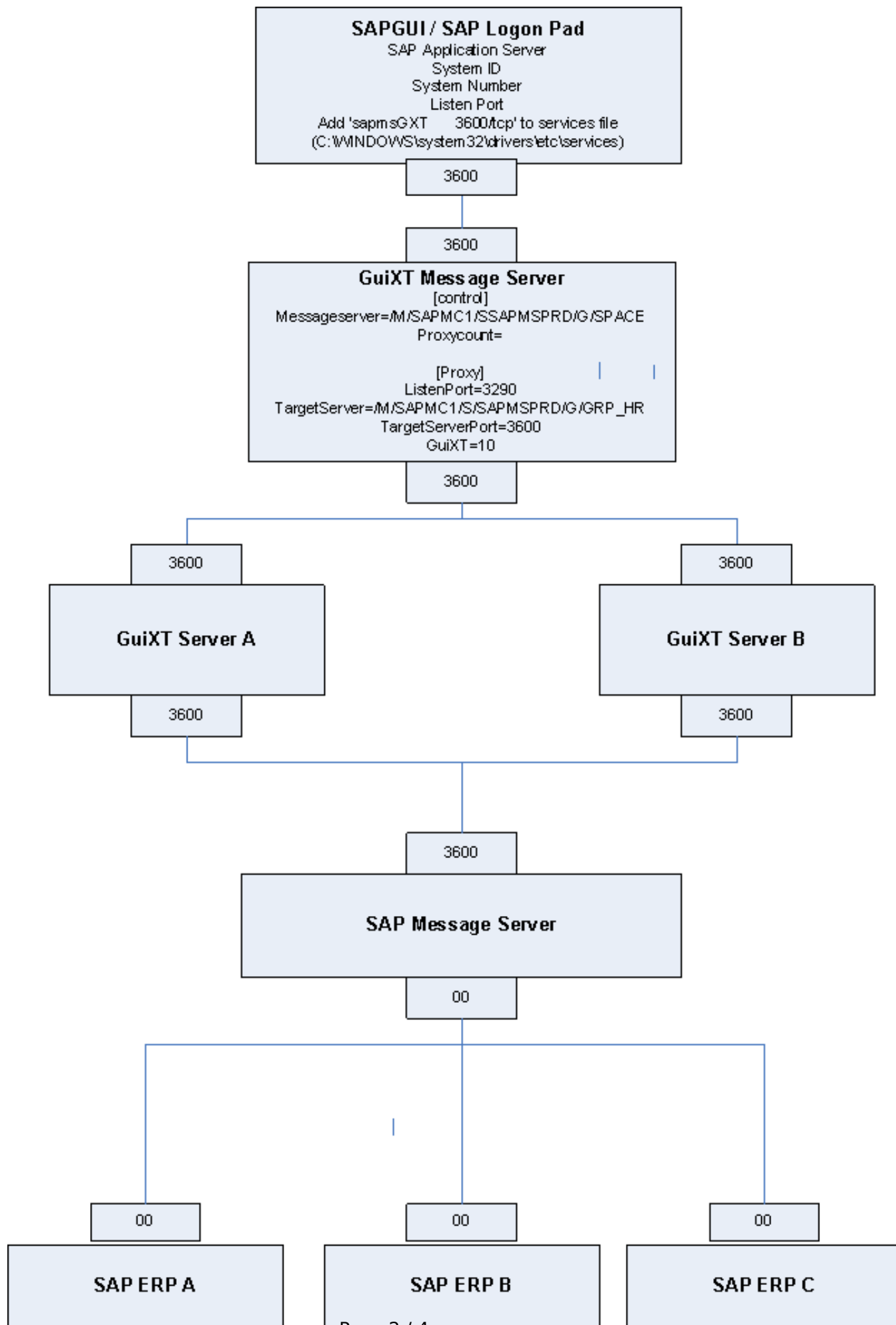
3.4.4 Scenario 4 - Liquid UI Message Server Communicating with Multiple Liquid UI Server and an SAP Message Server Communicating with Multiple SAP Application Servers

Scenario 4: Liquid UI Message Server

Using a Liquid UI Message Server aka GuiXT Message Server and multiple Liquid UI Servers aka GuiXT Servers with a SAP Message Server.

In this scenario, there is a single Liquid UI message server communicating with multiple Liquid UI servers and a single SAP message server. In this configuration, the Liquid UI Message Server balances multiple Liquid UI Servers, but can connect only to a single SAP ERP system - the SAP message server. The message server takes care of connecting to the various SAP application servers. This architecture would appear as shown below: The architecture is as follows:

Server Deployment



Server Deployment

Note: Your settings may be different from the examples shown below. Please verify your settings with your system administrator. In addition, remember that there may be multiple groups with different permissions, such as GRP_HR and GRP_SD. For example, the GRP_HR may only have access to application server 1, while GRP_SD may have access to application server 2.

SAP Logon Pad Settings

In this scenario, you will create a group entry for the Liquid UI Server in the SAP Logon Pad. The Logon Pad connection settings would be as shown in the following example:

- **Description:** Can be any unique descriptor for the Liquid UI message server. In our example, we used 'My GuiXT Server'.
- **Message Server:** The name of the Liquid UI Message Server. In our example, we used the name 'GUIXTMSSVR'.
- **Group:** Your group name. In this example, we will use 'SPACE'.
- **System ID:** Your three-digit system ID.

Once you have created the Logon Pad connection, go to C:\WINDOWS\system32\drivers\etc\services and add the following line to the bottom of the services file:

```
sapmsGXT 3600/tcp
```

This line instructs the server to use port 3600 and the TCP protocol.

Note: Your entry may be different - check with your system administrator.

saproxy.ini Settings

The saproxy.ini settings in the Liquid UI Server would be as follows. The user in our example is a member of the group 'SPACE'.

Note: Your settings may be different from the examples shown below. Please verify your settings with your system administrator. You must also remember that the same saproxy.ini settings must be on every Liquid UI Server that connects to your message server for the load balancing to work correctly.

[Control]

```
proxycount=1
```

Server Deployment

[Proxy]

Listenport=3290

TargetServer=/M/SAPMC1/S/SAPMSPRD/G/GRP_HR

TargetServerPort=3600

GuiXT=10

Unique solution ID: #1316

Author: Shilpa Sahu

Last update: 2019-08-02 09:18