

# Designer Features

## 5.02.07 Viewing SAP Groupbox Properties

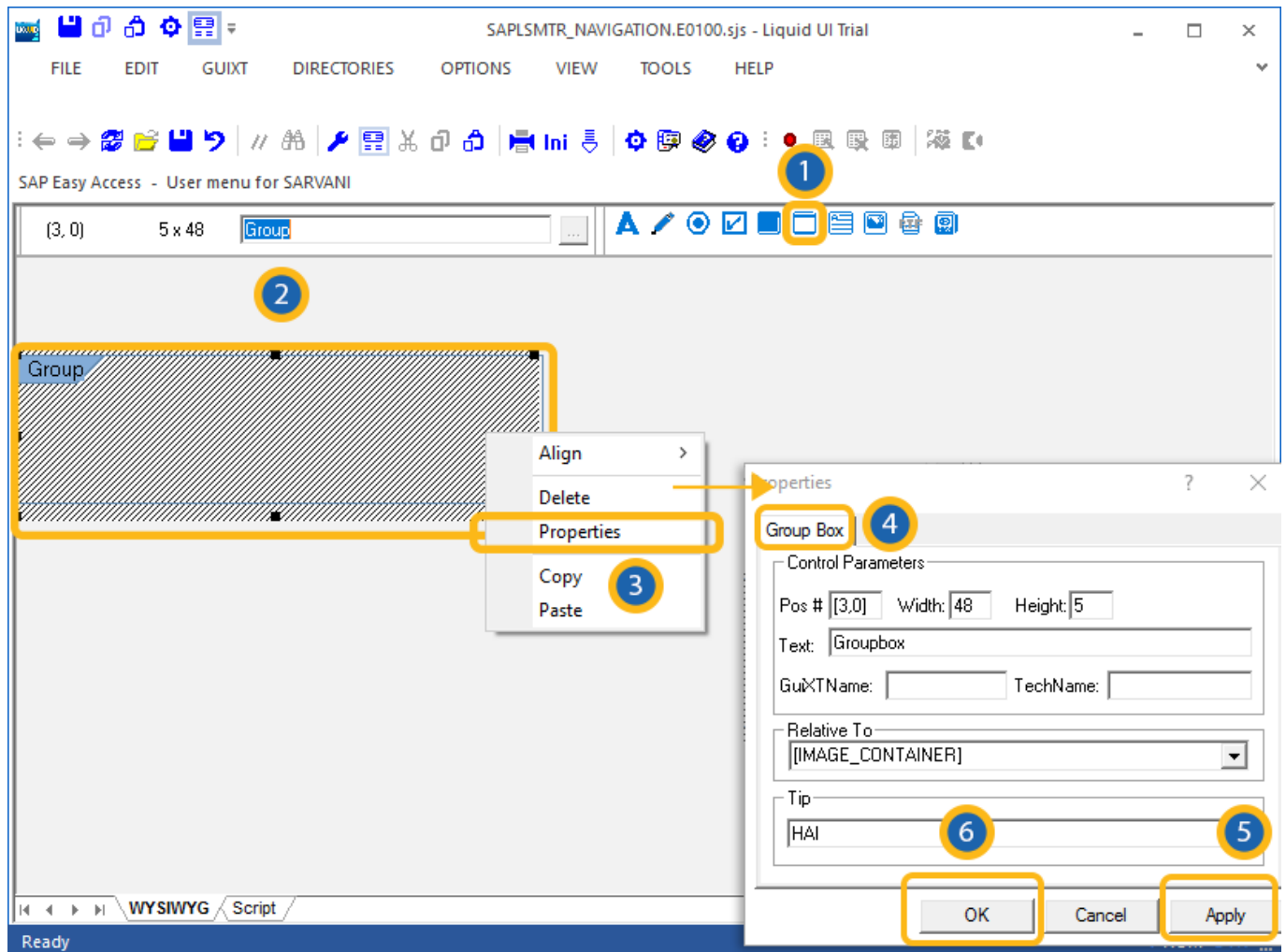
The properties dialog for the groupbox element contains a single tab, as follows:

- [Group Box](#)

You can modify the properties for the groupbox element from this dialog box. The tabs are more fully explained below.

### Group Box

The Group Box tab appears as shown below.



The available parameters are as follows.

# Designer Features

## Pos

Specifies the groupbox's onscreen coordinates. This is a read-only field - it is not user-modifiable.

## Width

Specifies the groupbox's width in pixels. This is a read-only field.

## Height

Specifies the groupbox's height in pixels. This is a read-only field.

## Text

Specifies the onscreen label for the groupbox.

## GuiXTName

Specifies the GuiXT name of the groupbox.

Unique solution ID: #1522  
Author: Shilpa Sahu  
Last update: 2019-08-06 06:27