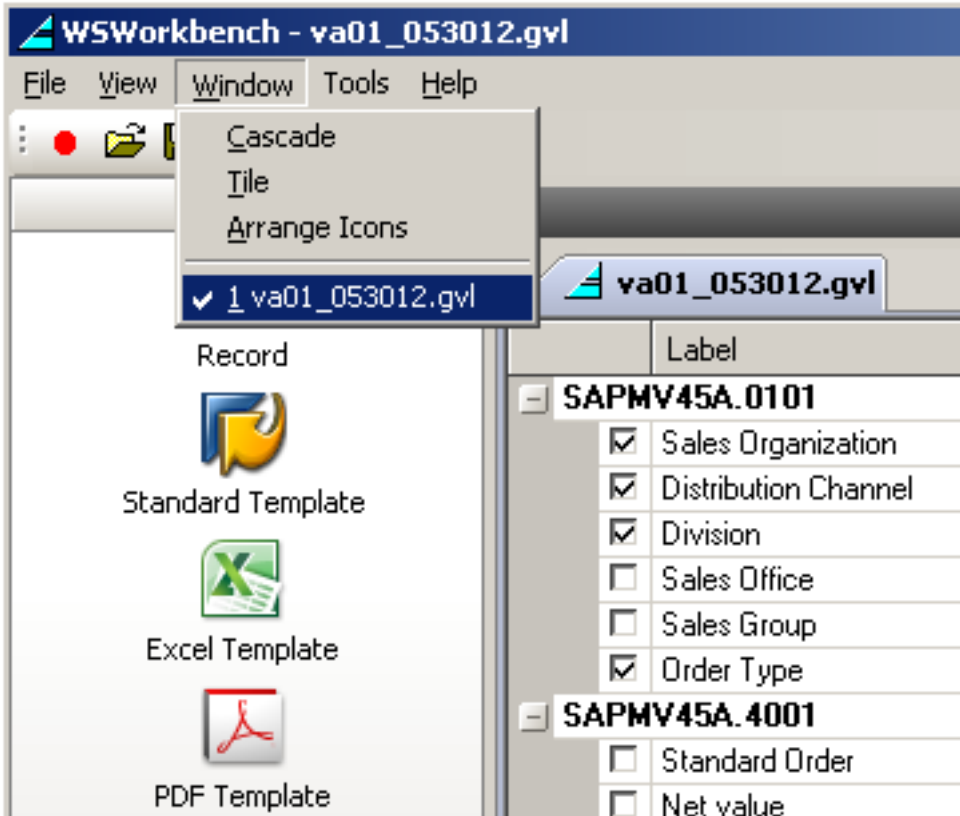


Workbench User Interfaces

5.1.2.3 Workbench - Window Menu

The Window menu controls how the Workbench windows display. It only displays when a recording is in progress or when a recorded file is being edited and appears as follows.



The Window menu contains following options:

- Cascade
- Tile
- Arrange Icons

All three of the above options are currently disabled. The Window menu also contains a list of the currently open files as shown below. The checkmark indicates the active window.

Unique solution ID: #1581
Author: Shilpa Sahu
Last update: 2019-08-01 11:34