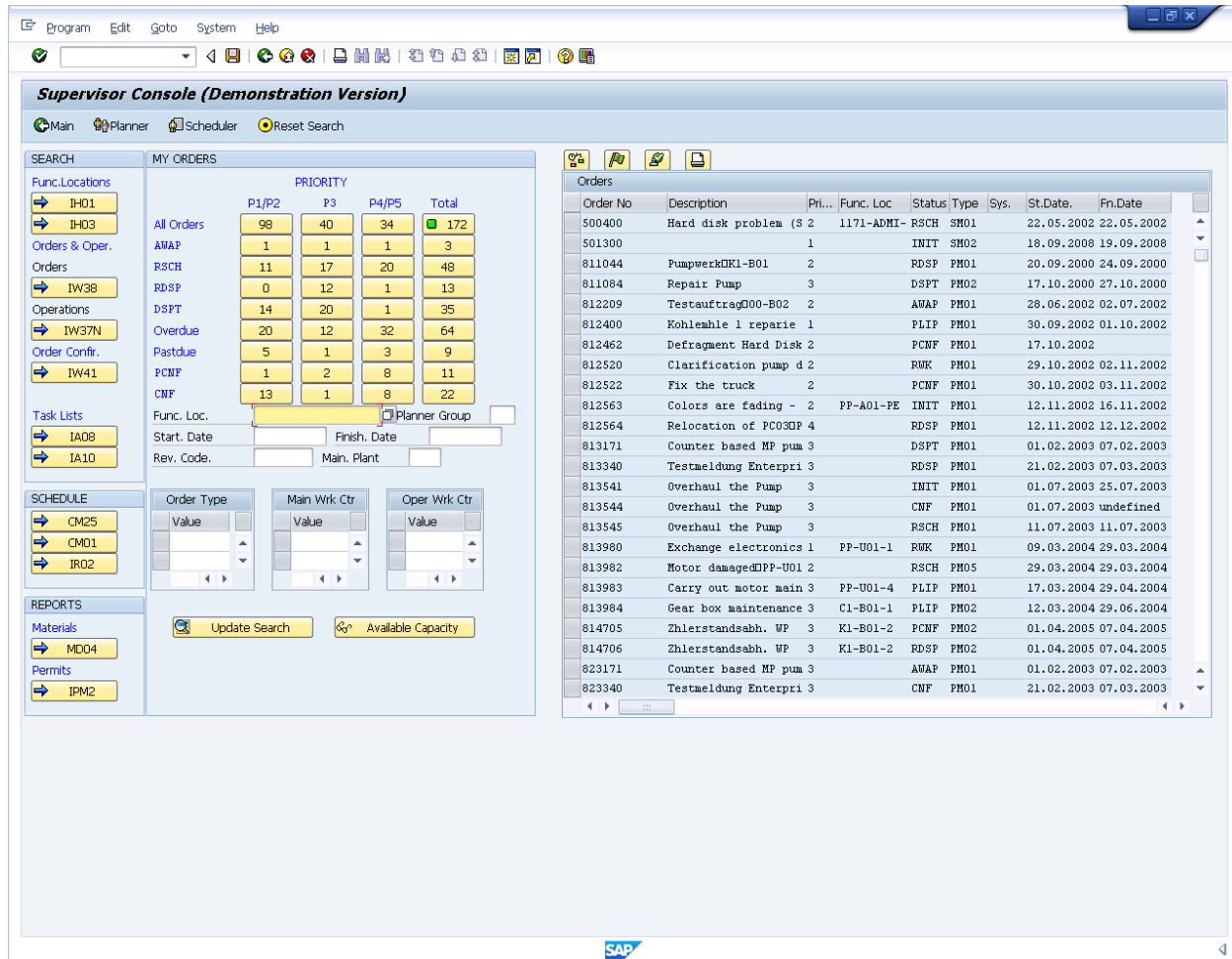


Using SAP Plant Maintenance Console

3.1.4 SAP Supervisor Console

List of the available features and functionality in the Supervisor Console of PSC.

The PSC Supervisor Console is divided into five main sections, as shown below:



The five sections are:

- Search
- Schedule
- Reports
- My Orders
- Order List

These sections are explained as follows.

Search

This section is located on the top left of the console and is designed to assist you in

Using SAP Plant Maintenance Console

finding information about your orders. There are several linked transactions, each of which is accessed from the linked pushbutton. Press the pushbuttons to launch the individual transactions. The included transactions are as follows:

IH01

Launches the 'Functional Location Structure: Selection' transaction in SAP.

IH03

Launches the 'Display Functional Location: Functional Location Selection' transaction in SAP.

IW38

Launches the 'Change PM Orders: Selection of Orders' transaction in SAP.

IW37N

Launches the 'Change Orders and Operations: Selection of Orders and Operations' transaction in SAP.

IW41

Launches the 'Create PM Order Confirmation' transaction in SAP.

IA08

Launches the 'Change PM Task Lists: Task List Selection' transaction in SAP.

IA10

Launches the 'Multi-Level Task List: PM Task List Selection' transaction in SAP.

Schedule

This section is located on the right side, immediately below the Search section. It contains the following functions:

CM25

Launches the 'Capacity Leveling' transaction in SAP.

CM01

Launches the 'Capacity Planning: Selection' in SAP.

IR02

Launches the 'Change Work Center: Initial Screen' in SAP.

Reports

This section is located on the right side, immediately below the Search section. It contains the following functions:

MD04

Launches the 'Stock/Requirements List' transaction in SAP.

IPM2

Launches the 'Change Permits: Selection of Permits' transaction in SAP.

My Orders

Using SAP Plant Maintenance Console

This section is located between the Search and Order List sections. It displays the current orders for the individual user based on the criteria entered in the search. The results are displayed in the top section as pushbuttons and the search criteria are below. The My Orders section contains the following functions:

Func Loc.

Enter the functional location of the desired order in this field.

Planner Group

Enter the planner group here.

Start. Date

Enter the work order's start date here.

Finish. Date

Enter the work order's finish date here.

Rev. Code

Enter the order's revision code here.

Main. Plant

Enter the number of the maintenance plant here.

Order Type

Enter the order numbers in this table.

Main Wk Ctr

Enter the maintenance work center numbers in this table.

Oper Wk Ctr

Enter the operational work center number here in this table.

Update Search

When you have entered all the relevant search criteria, click the Update Search pushbutton to update the search results.

Available Capacity

When you have entered all the relevant search criteria, click the Available Capacity pushbutton to view the available capacity.

Order Lists

This section does not have a title as the others do - it is simply a list of the current work orders returned based on choosing the respective pushbutton displaying the number of orders in the priority matrix. It is located on the right side of the console.

Unique solution ID: #1612

Author: Shilpa Sahu

Last update: 2019-08-02 08:18